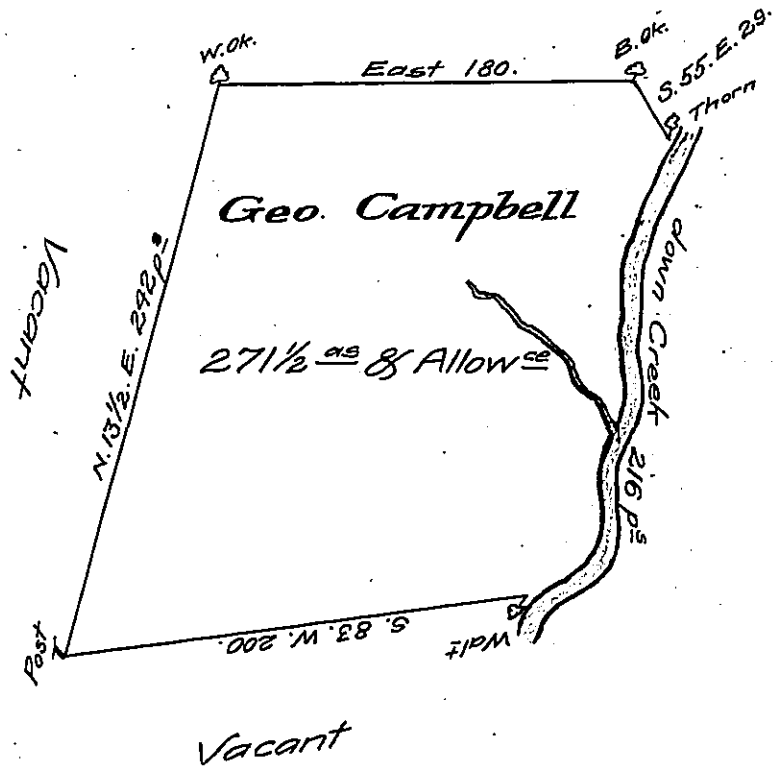


C-198-278.

John Smith's Claim



Plumb Tree Bottom Survey'd to George Campbell on the 13th
 Day of Nov^r 1769 Containing Two hundred Seventy one Acres & an half &
 Allowance of Six $\frac{1}{2}$ C^t Situate on the North Side of Plumb Creek Cumberland
 County By Order of the 3^d Day of April 1769 No 1994

$\frac{1}{2}$ Joshua Elder D.S.

To John Lukens Esq^r S. Gen^l

IN TESTIMONY that the above is a copy of the original remaining on file in
 the Department of Internal Affairs of Pennsylvania, made
 conformably to an Act of Assembly approved the 16th day of
 February, 1833, I have hereunto set my Hand and caused
 the Seal of said Department to be affixed at Harrisburg,
 this fourth day of May 1908.

Henry Houder
 Secretary of Internal Affairs.

6.150.
 248.
 23.355.